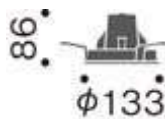




MMD20571-02-91



- Rotating angle 360°
- Embedding hole ϕ 125mm



INT'L03 P.60

[Digital catalogue](#)

- Class HID 35W
- Medium
- Adjustable

Warm White(3000K)

■ Item number : MMD20571-02-91 / Black

- LED 24.3W
Average Service Life / 40,000hrs
- Die-cast aluminium paint finish
- LED Driver will supply separately
- DC Voltage 41.6V · DC Current 500mA
- It can not be installed other direction then shown in the picture
- Applicable ceiling thickness: 5 to 25 mm
- Can not be replaced only LED
- Please understand,there is a colour non-uniformity in light colour of LED
- Minimum lighting distance 0.3m
- CRI : 92
- Lumen Output : 1058Lm
- LED Module efficiency : 45.0Lm/W
- Embedding hole / ϕ 125
- Size / ϕ 133×D86
- Weight / 0.9kg
- Rotating angle 360°

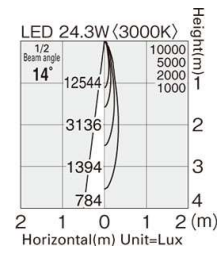
Unit Image (JPEG)



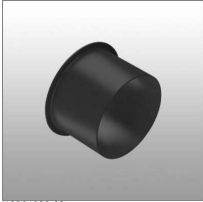
Light distribution/Illuminance distribution relevant data

LED 24.3W

[IES file](#) Can be downloaded when click it.

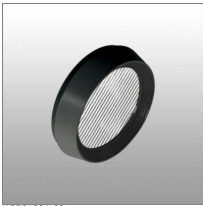


● Available option



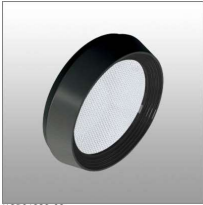
MOP01220-02

[MOP01220-02](#) (Hood M)



MOP01221-02

[MOP01221-02](#) (Spread Lens M)



MOP01222-02

[MOP01222-02](#) (Soft Edge Filter M)

[Back to main page](#)