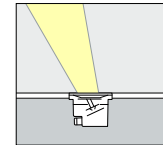
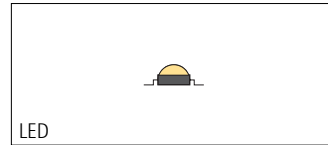
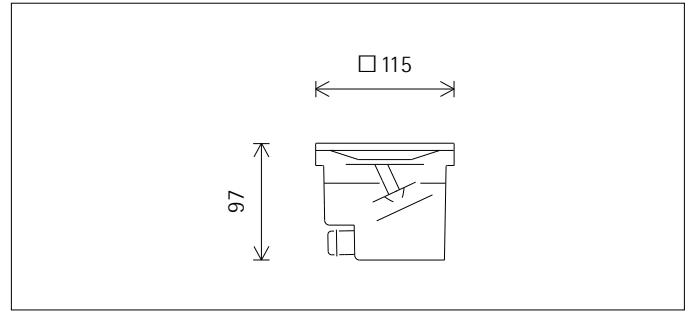
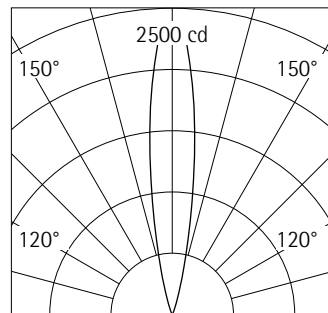


Directional luminaire



33803.000 Silver
 LED 3W 345lm 3000K warm white
 Switchable
 Version 7
 Spherolit lens, spot

Product description
 For mounting in accessories.
 Housing: corrosion-resistant cast aluminium, No-Rinse surface treatment. Black double powder-coated.
 Control gear. Connection cable, 2x1.5mm², L 500mm.
 LED module: high-power LEDs on metal-core PCB. Collimating lens made of optical polymer. 0°-25° tilt, 90° rotation.
 Aperture mask: aluminium, silver, mirror-finish anodised. Spherolit lens, spot.
 Safety glass: 6mm, clear. Load: 5kN.
 Mounting accessories to be ordered separately.
 Protection mode IP67: dust-proof and protected against the results of temporary immersion.
 To avoid submersion in standing water provide local drainage.
 Protection Class II
 Weight 0.90kg
 Version with 2700K CRI>=90 or 4000K CRI>=90 available on request.



h(m)	E(lx)	D(m)
		17°
5	96	1.49
4	149	1.20
3	266	0.90
2	598	0.60
1	2390	0.30

Technical data

Luminous flux of the luminaire	267lm
Connected load	5W
Luminaire efficacy	53lm/W
Colour deviation	2 SDCM
Colour rendition index	CRI ≥90
Lumen maintenance (LM-80/TM-21)	L90/B10 ≤50000h
Lumen maintenance (LED manufacturer specifications)	L90 ≤100000h
LED failure rate	0.1% ≤50000h
Dimming range	--
Dimming method	--
LMF	E
Energy efficiency class	EEL A++
Standby power per control gear	--
Luminaires per circuit breaker B16	50
Temperature on the light aperture	30°C

For your regional contact in the ERCO
 Sales network click here
www.erco.com/contact

Technical Region: 220V-240V/50Hz
 We reserve the right to make technical and design changes.
 Edition: 27.10.2017
 Current version under
www.erco.com/33803.000

Planning data

Cleaning (a)	1				2				3			
	P	C	N	D	P	C	N	D	P	C	N	D
LMF	0.96	0.94	0.90	0.86	0.93	0.91	0.86	0.81	0.92	0.90	0.84	0.79
RSMF	0.91	0.83	0.68	0.51	0.90	0.81	0.67	0.50	0.90	0.81	0.67	0.50

Hours of operation (h)	1000	5000	10000	20000	30000	40000	50000
LLMF	1.00	0.99	0.98	0.96	0.94	0.92	0.90
LSF	1	1	1	1	1	1	1

MF	LMFxRSMFxLLMFxLSF
MF	Maintenance Factor
LMF	Luminaire Maintenance Factor
RSMF	Room Surface Maintenance Factor
LLMF	Lamp Lumens Maintenance Factor
LSF	Lamp Survival Factor
P	Room pure
C	Room clean
N	Room normal
D	Room dirty

Technical data in accordance with international norms and standards

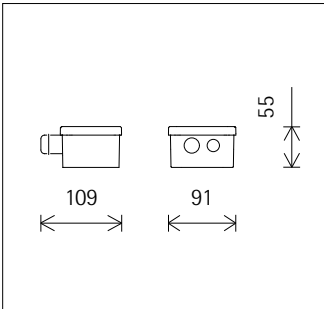
IEC 60598	Luminaires – Part 1+2: general requirements, specific requirements and tests
IEC 62031	LED modules for general lighting – safety requirements
IEC 62471	Photobiological safety of lamps and lamp systems
EN 13032-4	Light and lighting – measurement and representation of photometric data
CIE 13	Method of measuring and specifying colour rendering properties of light sources

All technical data is subject to industrially standard tolerances.
Also see www.erco.com/erco-led

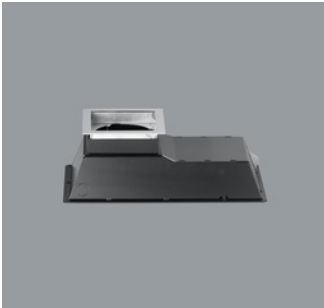
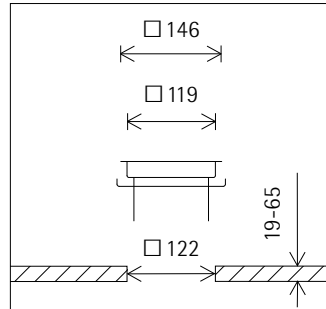
Accessories



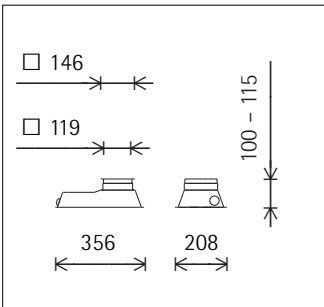
33852.000
 Junction box
 Polymer, black.
 2 screwed cable glands for cable diameters of 5-14mm.
 Protection mode IP67: dust-proof and protected against the results of temporary immersion.
 Weight 0.10kg
CE IP 67



33786.000
 Mounting frame
 To cover the floor aperture. Mounting in hollow floor.
 Stainless steel. Clamp extension 19-65mm.
 Weight 0.42kg



33819.000
 Recessed housing for screed-covered mounting: metal, powder-coated.
 Height adjustable frame to cover the floor aperture: stainless steel, for floor coverings of 2-17mm. Tilt adjustment max. 10° in all directions.
 Weight 3.10kg



33799.000
 Suction cup for removing the luminaire from the recessed housing, mounting frame or mounting ring.
 Rubber, black



33838.000
 Recessed housing for screed-covered mounting: metal, powder-coated.
 Height adjustable frame with flush floor, trim detail: stainless steel, for floor coverings of 2-17mm. Tilt adjustment max. 10° in all directions.
 Weight 2.95kg

